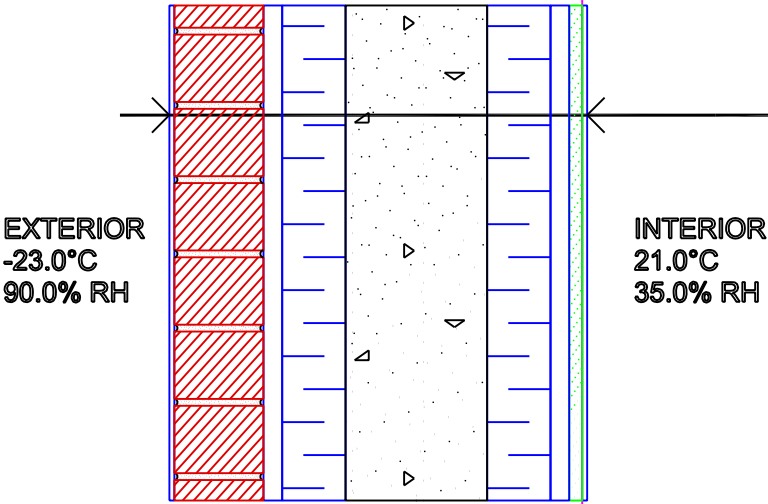
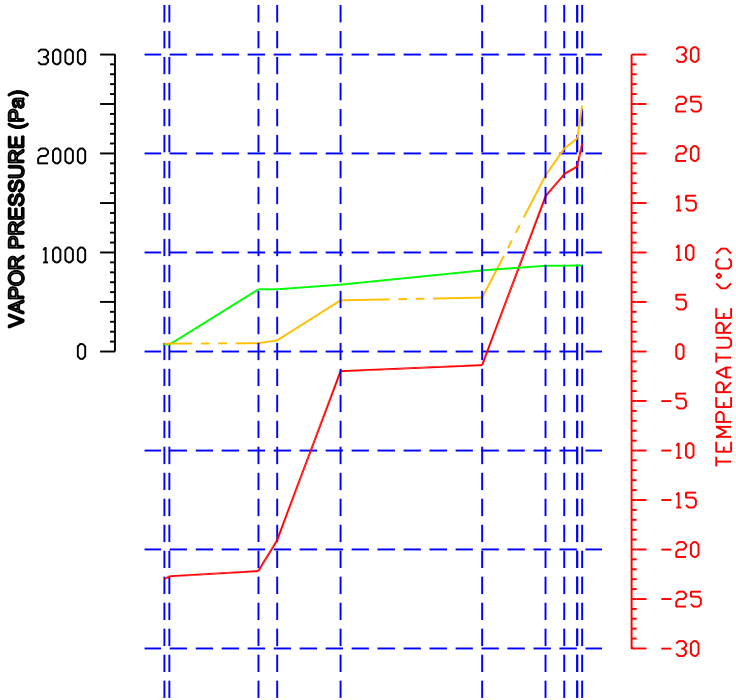


THERMAL ANALYSIS POLYCRETE BIG BLOCK 1600 CLAY BRICK



DESCRIPTION	RSI	R
Exterior air film	0.03	0.2
Clay brick 3.5" (90 mm)	0.06	0.3
Air space, 3/4" (19.0 mm)	0.33	1.9
Polystyrene exp. Type II, 2.5" (64 mm)	1.79	10.2
Concrete, 5 5/8" (143 mm)	0.06	0.4
Polystyrene exp. Type II, 2.5" (64 mm)	1.79	10.2
Air space, 3/4" (19.0 mm)	0.24	1.3
Gypsum panel, 1/2" (13.0 mm)	0.08	0.5
Paint latex int. white mat	0.00	0.0
Interior air film	0.24	1.4

Total Thermal Resistance **4.62 26.2**
Thermal Conductivity **K = 0.2164**



The heat loss rate is 9.52 Watt/m2.
The dewpoint temperature is 2.6 degrees Celsius.

Legend

- Temperature
- Vapor pressure for continuity of flow
- - - Saturated vapor pressure