

**1** INSUL-DECK PANELS PARALLEL TO ICF WALL  
Scale: N.T.S.

Plastbau® Technology  
**INSUL-DECK**

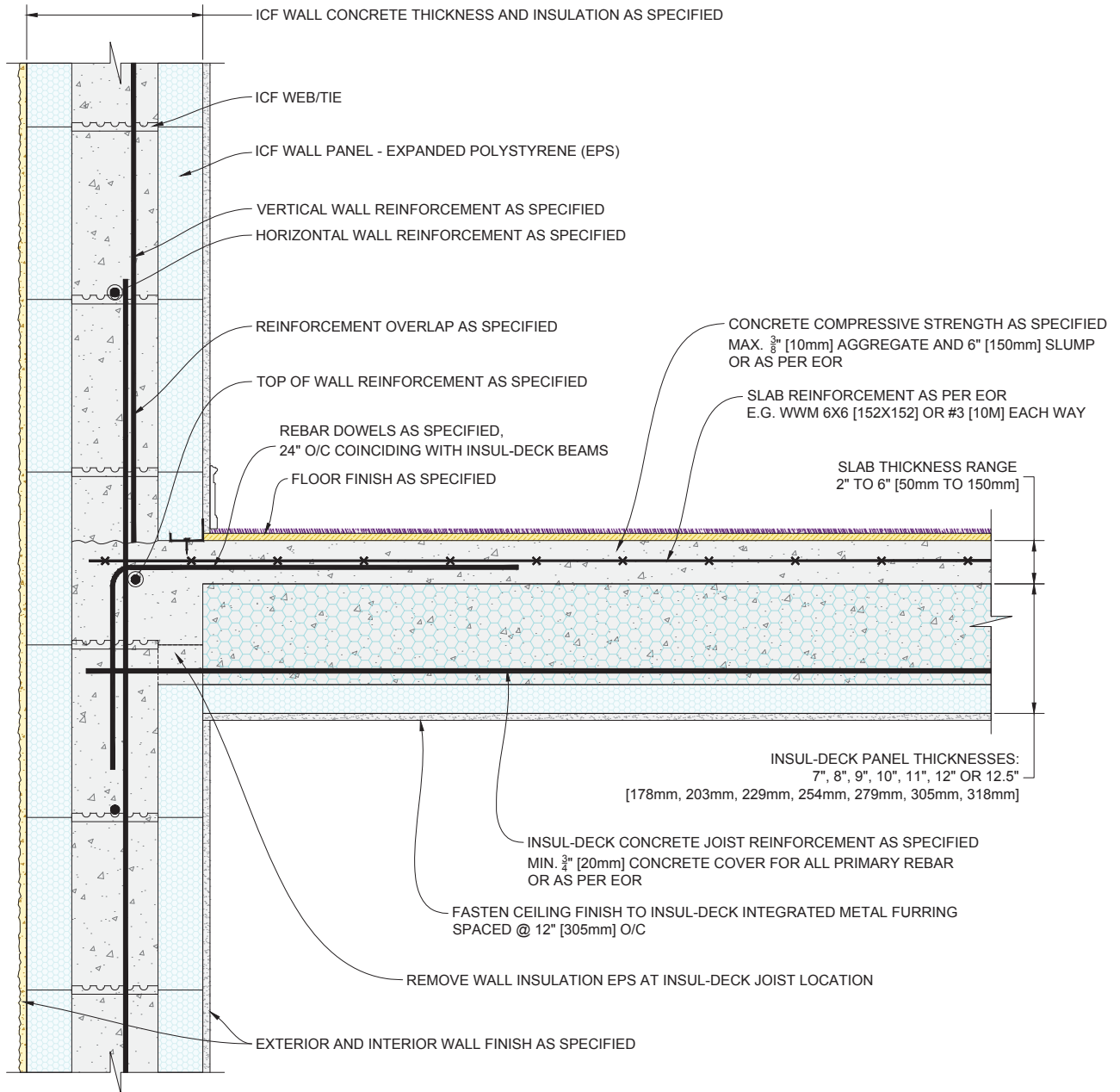
**INSUL-Deck**  
65 Grady Knight Industrial Blvd.  
Villa Rica, GA 30180-2107

Phone: 800-475-6720  
Fax: 727-216-7946  
Email: [insuldeck@insuldeck.com](mailto:insuldeck@insuldeck.com)  
Web: [www.insuldeck.com](http://www.insuldeck.com)

## INSUL-DECK TO ICF WALL

DATE DRAWN:	2017-02-15	COMMENTS:	N/A
REVISION NO.:	YYYY-MM-DD	SHEET SIZE:	8.5" x 11" [216mm x 279mm]
REVISION DATE:	N/A	SCALE:	NOT TO SCALE
DRAWN BY:	M. HART	APPROVED BY:	G. KUSTERMANN
			<b>ID-202</b>

IT IS THE RESPONSIBILITY OF THE USER TO COMPLY WITH ALL APPLICABLE REGULATIONS AND BUILDING CODE REQUIREMENTS CONCERNING THE USE OF THESE PRODUCTS.  
IT IS FURTHER THE RESPONSIBILITY OF THE USER TO RESEARCH AND UNDERSTAND SAFE METHODS OF USE AND HANDLING OF THESE PRODUCTS.



**1** INSUL-DECK PANELS PERPENDICULAR TO ICF WALL  
Scale: N.T.S.

Plastbau® Technology  
**INSUL-DECK**

**INSUL-Deck**  
65 Grady Knight Industrial Blvd.  
Villa Rica, GA 30180-2107

Phone: 800-475-6720  
Fax: 727-216-7946  
Email: [insuldeck@insuldeck.com](mailto:insuldeck@insuldeck.com)  
Web: [www.insuldeck.com](http://www.insuldeck.com)

## INSUL-DECK TO ICF WALL

DATE DRAWN:	2017-02-15	COMMENTS:	N/A
REVISION NO.:	YYYY-MM-DD	SHEET SIZE:	8.5" x 11" [216mm x 279mm]
REVISION DATE:	N/A	SCALE:	NOT TO SCALE
DRAWN BY:	M. HART	APPROVED BY:	G. KUSTERMANN
			<b>ID-203</b>

IT IS THE RESPONSIBILITY OF THE USER TO COMPLY WITH ALL APPLICABLE REGULATIONS AND BUILDING CODE REQUIREMENTS CONCERNING THE USE OF THESE PRODUCTS.  
IT IS FURTHER THE RESPONSIBILITY OF THE USER TO RESEARCH AND UNDERSTAND SAFE METHODS OF USE AND HANDLING OF THESE PRODUCTS.